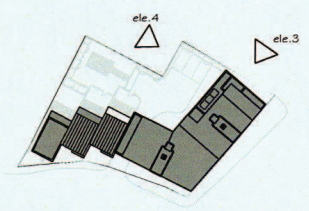




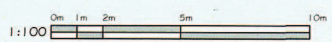
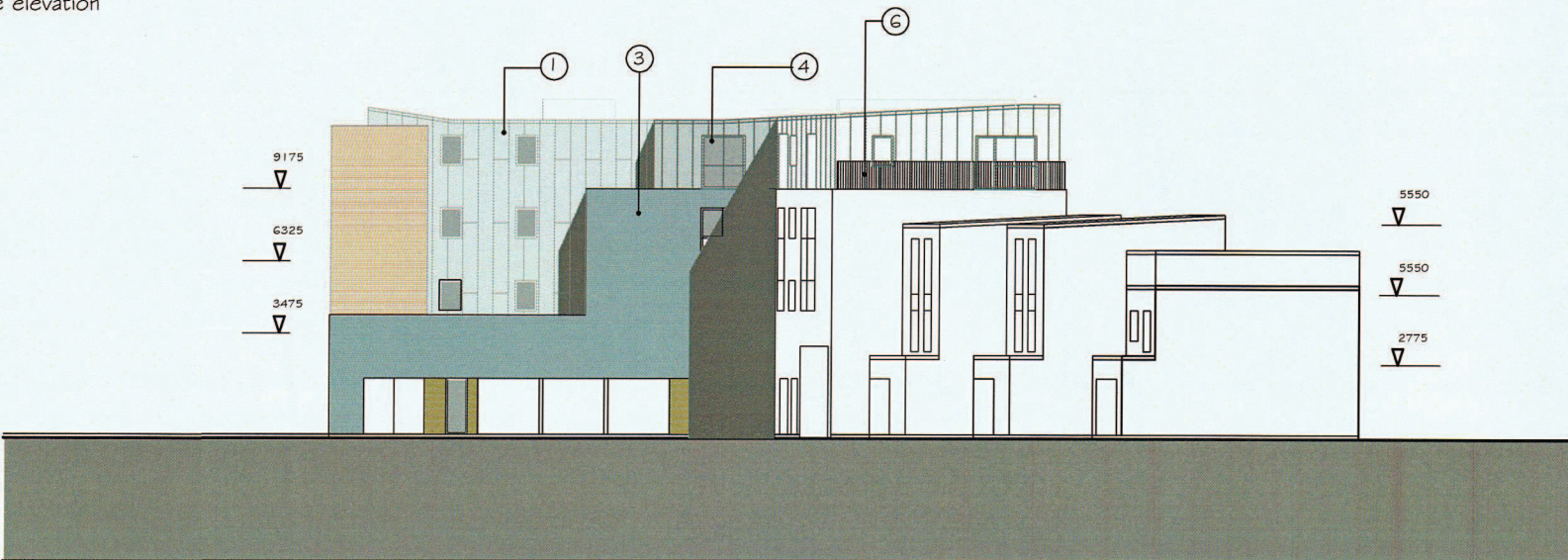
- material schedule
1. natural patterned zinc rainscreen
 2. autumn russett sovereign stock facing brickwork by Baggeridge
 3. blue sovereign stock facing brickwork by Baggeridge
 4. aluminium windows ral 9024 (dark grey) with shallow square edge profile
 5. horizontal wrought cedar boarding
 6. simple powder coated metal railings ral9024 (dark grey). perimeter frame to be 45mm x 6mm flat framing with 30mm x 6mm square section pails at max. 100mm centres. top rail is to have a bolted half round capping in cedar finish
 7. polycarbonate sectional garage door with anodised frames ral9024 (dark grey) and panels
 8. glazed prefabricated canopy
 9. 75mm deep zinc shallow profile to top of wall

Notes:
 All dimensions are to be checked on site before the commencement of work.
 Any discrepancies are to be reported to the Architect for verification.
 Figure dimensions only are to be taken from this drawing.
 This drawing is to be read in conjunction with all other relevant design documentation.



key

REVISIONS:
 rev 1 by october 2008 material information amended
 rev 2 - per 108 planning submitted prior to design review panel
 rev 3 - by rev 108 planning submitted prior to appeal hearing



Planning Set

client:
 major link limited

project:
 residential development
 former kwik fit
 360-364 london road
 london cr4 3nd

description:
 elevations



head office:
 the old stone mansion, 10 al jilwa st
 aberystwyth, mmonmouthshire np23 5r
 tel: 01872 851225 fax: 01872 851227

satellite office:
 Newport
 8th floor, 128 ceafalon road,
 newport, south wales, np19 7za
 tel: 01633 245000 fax: 01633 246812

e-mail: info@jdwarchitects.co.uk
 www.jdwarchitects.co.uk

drawn	checked
JW	1:200@A1
date	sheet of
July 08	
proj no	
JW357 - 109	

Appeal Elevations

This page is intentionally left blank